

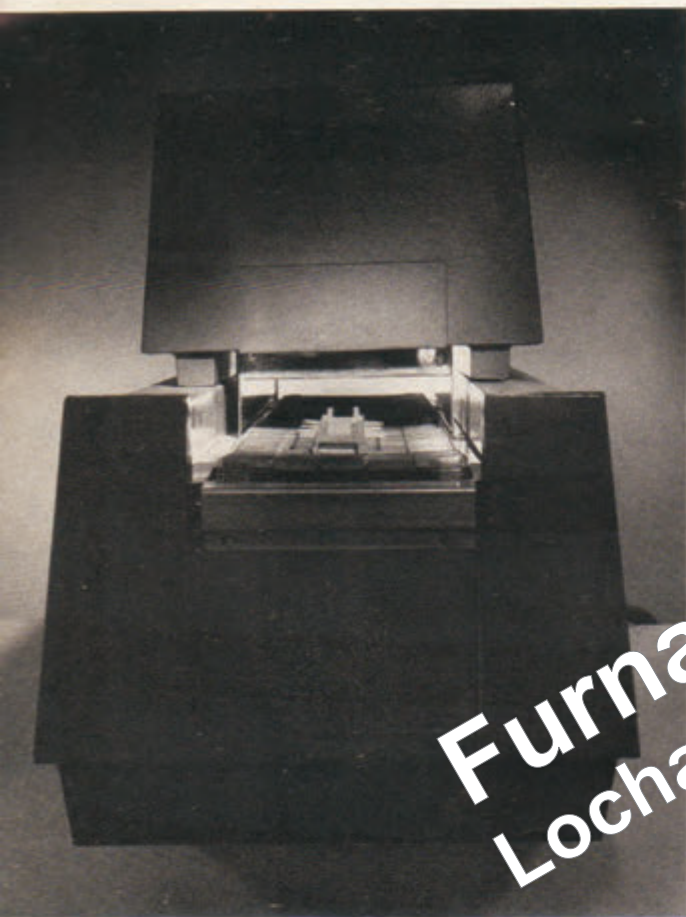
M-1000  
M-1000  
M-1000  
M-1000  
M-1000

[FurnacePros.com](http://FurnacePros.com)  
Lochaber Cornwall, Inc.



M-1000  
M-1000  
M-1000

the  
versatile  
infrared  
conveyor  
oven



FurnacePros.com  
Lochaber Cornwall, Inc.

M-100

M-100

M-1000

The variety of heating, reflow soldering, curing, and drying jobs this small, conveyORIZED unit can handle are virtually without limit. Faster and more efficient than conventional ovens, the M-100, with clean, infrared heat, dramatically reduces the time required to process parts. It's no longer necessary to remove parts from the production line to heat for long periods. The M-100 can be integrated directly into modern production lines to achieve a continuous, uninterrupted production flow.

**Completely conveyORIZED**—No trays or racks to handle—parts are fed on to the conveyor and automatically come out finished. Can be fed directly from the discharge of other equipment such as silk screen printing machines, marking machines, automatic potting stations, etc.

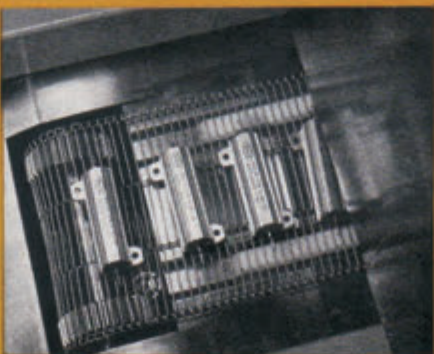
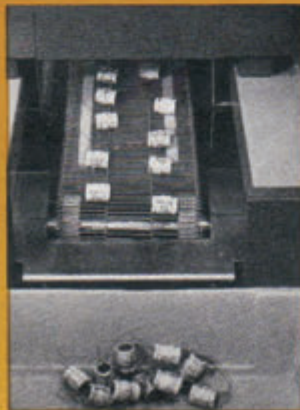
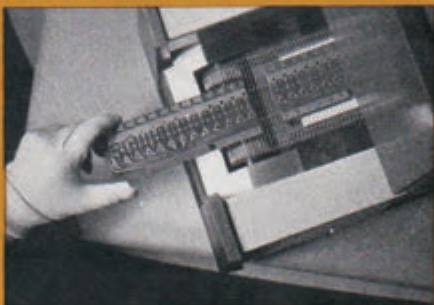
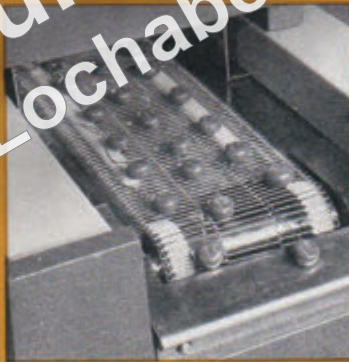
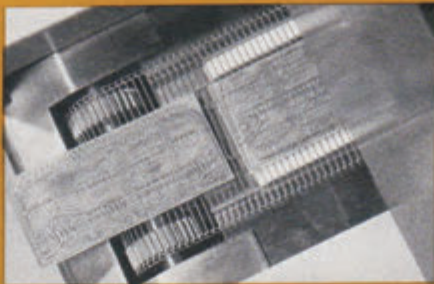
**Small, compact**—The M-100 is completely portable and is small enough to be mounted atop a table or work bench. Operates from standard 110v power source; just plug it in and it's ready to go to work.

**Instant start-up**—The M-100 is ready for operation almost immediately upon being turned on—no long heat-up periods.

**Infrared heat**—Clean, efficient infrared heat is emitted from a specially designed heat panel. Heat is uniform throughout the width and length of the heating section. The infrared panel can be raised and lowered above the conveyor.

**Solid state controls**—Advanced solid state controls are utilized for temperature and conveyor speed control. Temperature is infinitely adjustable to any desired level. Conveyor speed is continuously variable from 1.5 to 15 inches per minute. A ten-turn potentiometer allows precise adjustment of conveyor speed. A meter is provided on control console for indication of heater output.

**Line voltage regulation**—The M-100 has built-in line voltage regulation designed to keep heat output and conveyor speed constant despite fluctuations in line voltage, thereby ensuring product uniformity.

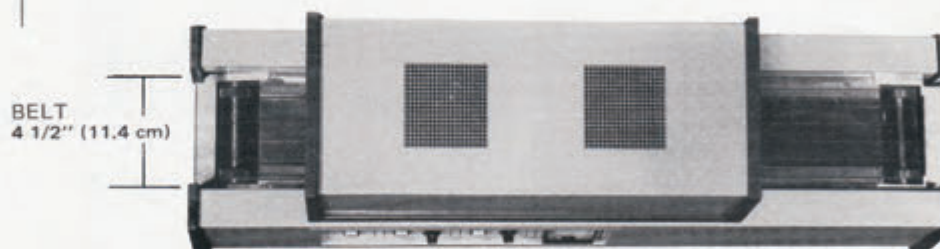
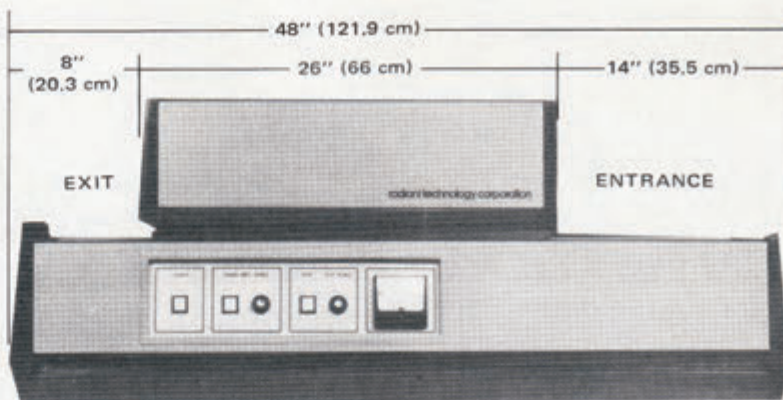
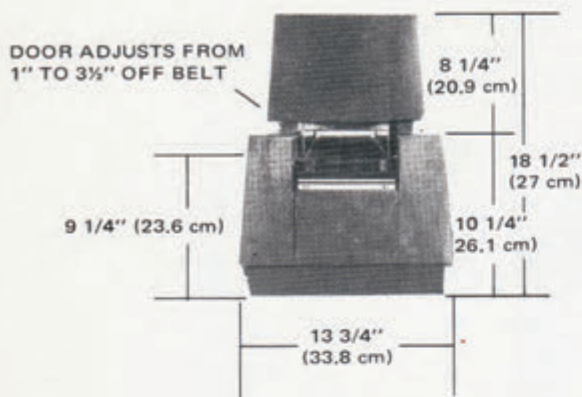


FurnacePros.com  
Lochaber Cornwall, Inc.

## fast processing

- Bake photo resist on silicon wafers.
- Reflow solder paste or solder pre-forms on integrated circuits.
- Cure epoxy potting compounds.
- Cure nomenclature and legend inks on printed circuit boards.
- Cure conformal coatings.
- Fuse components to pre-tinned or solder paste screen printed hybrid micro-circuits.
- Fuse plated tin-lead to conductive areas on printed circuit boards.
- Cure offset printed marking inks.
- Cure bonding epoxies or encapsulating epoxies on integrated circuits.
- Cure resist inks on printed circuit boards.
- Process heat shrink tubing.
- Dry thick film paste (to remove solvent fumes) on hybrid circuits prior to firing.
- Give us a call on details on your application.

# M-100



## SPECIFICATIONS

**Power**—120v, 60 hz., single phase, 2.7 kw (22.5 amps). Other voltages on request.

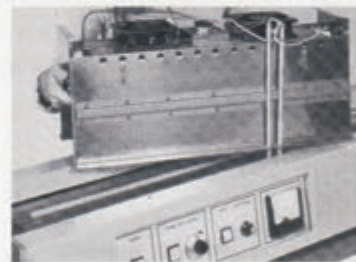
**Heat**—Heater panel emits far infrared for temperatures to 400°C (752°F).

**Conveyor**—4½" wide open wire stainless steel conveyor belt. Speed is continuously variable from 1.5 to 15 in./min.

**Line Voltage Regulation**—Fluctuations in supply voltage, -15% to +10%, are compensated to keep load voltage and motor speed to within a fraction of 1%.

**Weight**—135 lbs. (61 kg). Crated for shipping 150 lbs. (62.5 kg).

**Options**—Plumbing for nitrogen purge and flow meter, other voltages, temperature indicator, digital display belt speed, 6 inch wide conveyor belt, teflon impregnated fiberglass solid belt, or close weave stainless steel belt.



Infrared heating section can be easily removed to allow access to conveyor and interior for inspection and cleaning.

Radiant Technology Corporation designs and builds a complete line of infrared heating systems for the electronics industry. For information on prices, delivery, or special requirements on the M-100, or any system, contact your RTC representative or the RTC factory.

FurnacePros.com  
Lochaber Cornwall, Inc.



radiant technology corporation

13856 Bettencourt Street  
Cerritos, California 90701  
(213) 404-3526 TWX:910-583-5710