

1.0 Scope

This instruction covers use of furnace software to save process control recipes.

2.0 Recipe Editor

The Recipe Editor is a worksheet for creating a new recipe or making changes to an existing recipe. When the Recipe Editor is off-line, changes to the recipe only exist on the worksheet and do not affect furnace operation nor are they stored on the furnace computer.

3.0 Recipe Name vs. Recipe File Name

The Recipe Name is a user defined name given to each recipe during the Recipe Save process. The Recipe Name is often the same as the recipe file name (without the .rcp extension). However, it is possible to save a number of recipes with the same Recipe Name but different recipe file names which can cause confusion.

The example in this document starts with a recipe named Default in the editor and in the furnace. The Recipe in Editor name is at the top of the screen in the title bar. The name of the recipe running in the furnace is shown in the lower right hand corner of the Recipe Editor screen.

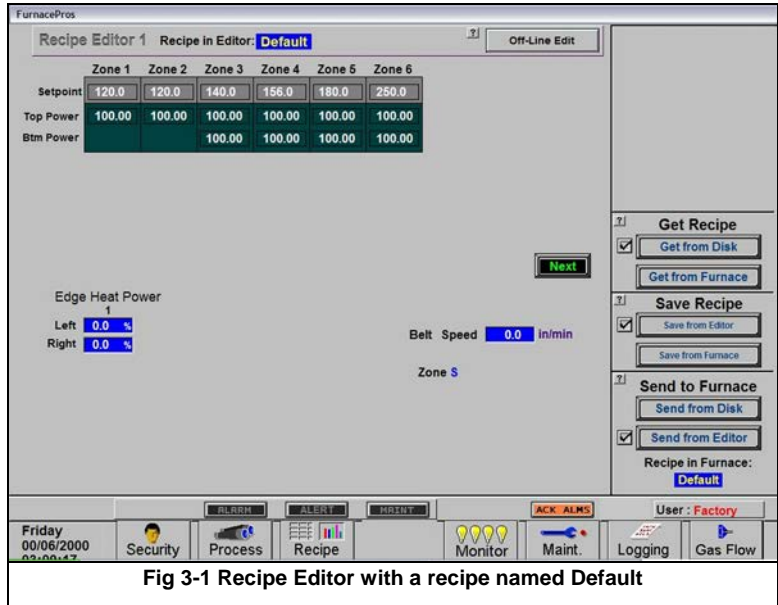


Fig 3-1 Recipe Editor with a recipe named Default

4.0 Save Recipe – Save from Editor

To save a recipe that is currently viewed in the editor, select the Save from Furnace button in the save Recipe box on Recipe Editor 1.

The Save Recipe dialog will appear (Fig 4-2a). Change the recipe name to a new name (e.g. NewRecipeName) as in Figure 4-2b.

Click on Save to R: button.

The Select Destination File For Upload dialog box will appear (Fig 4-3a).

Enter the new file name in place of the asterisk (*) and press OK (Fig 4-3b). The file will be saved in the R:\ directory with the new recipe name and with the new file name (RecipeName.rcp) as an rcp file.



Fig 4-1 Save from Editor button

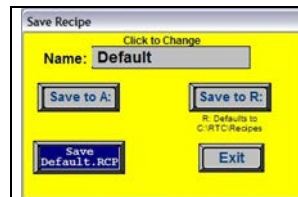


Fig 4-2a Safe Recipe

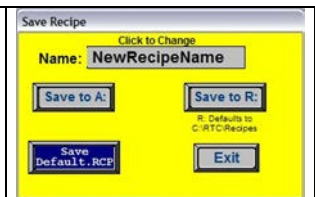


Fig 4-2b Enter new recipe name

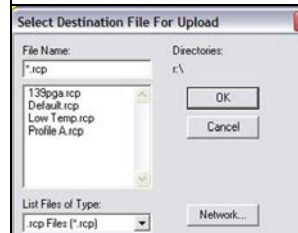


Fig 4-3a Save to R:



Fig 4-3b Enter new file name

5.0 Apply the new Recipe

After the recipe in the editor has been saved, the Recipe Editor screen will show the name of the new recipe in the title bar at the top of the screen (NewRecipeName in fig 5-1). Note that the lower right hand corner will still show the name of the recipe running in the furnace (Default in fig 5-1)

The recipe in the Recipe Editor must be sent to the furnace in order for it to be used.

To send the recipe in the editor to the furnace, click on Send from editor button in Send to Furnace box (Fig 5-2).

The Recipe Editor screen will now appear similar to fig 5-3. The name of the Recipe in Furnace has changed to the name in the editor as shown in the lower right of the screen in fig 5-3.

Go to the Process screen and verify that the correct recipe values are running in the furnace.

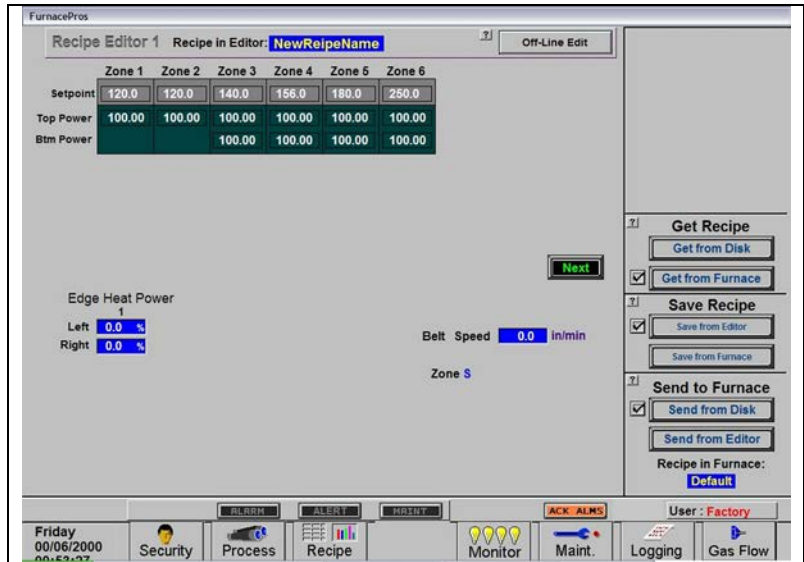


Fig 5-1 Recipe in Furnace different from Recipe in Editor

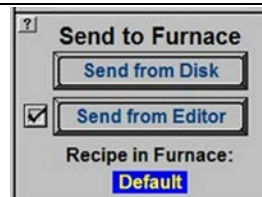


Fig 5-2 Send Recipe in Editor to Furnace

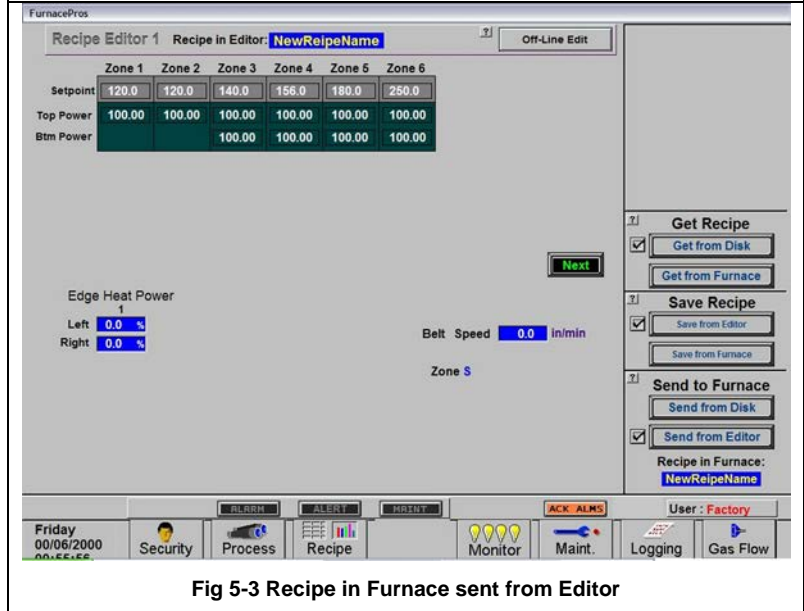


Fig 5-3 Recipe in Furnace sent from Editor