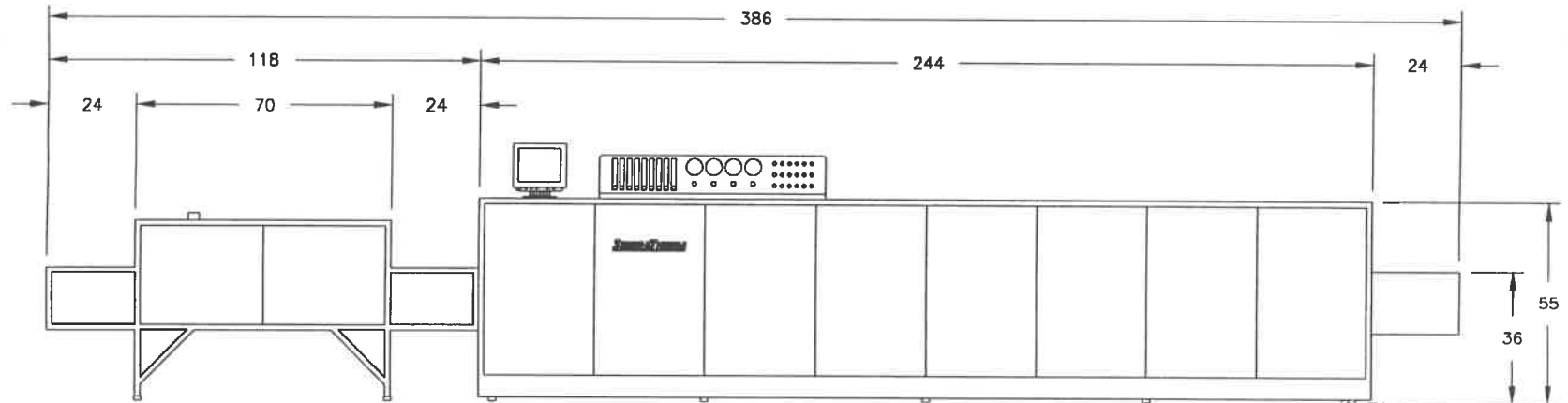
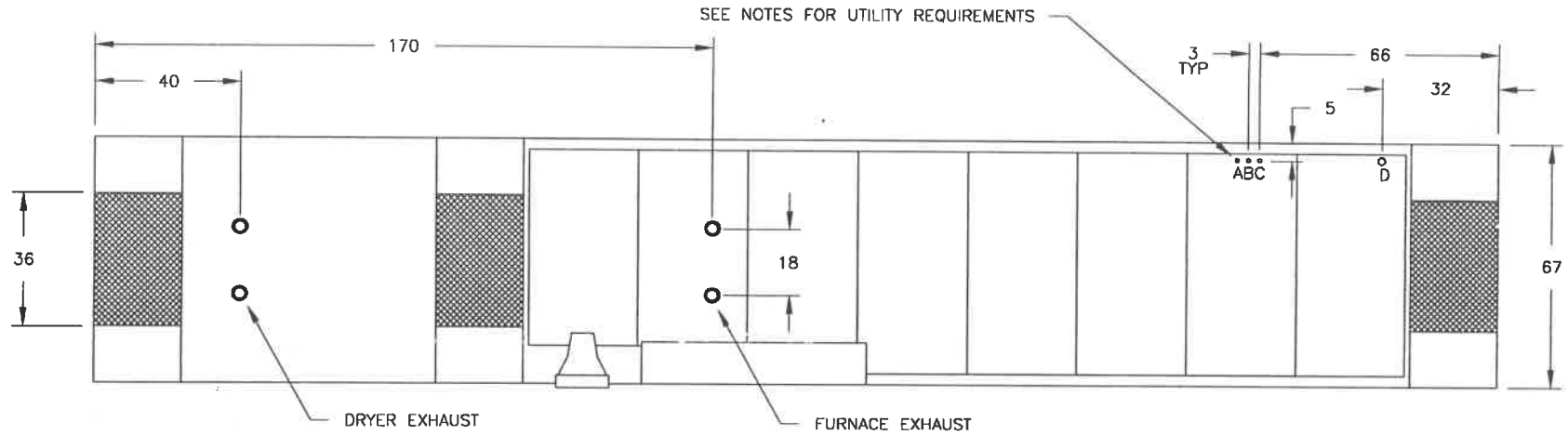


THIS DOCUMENT IS THE PROPERTY OF SIERRATHERM. ITS USE IS AUTHORIZED ONLY FOR RESPONDING TO A REQUEST FOR QUOTATION OR FOR THE PERFORMANCE OF WORK FOR SIERRATHERM. ALL QUESTIONS MUST BE REFERRED TO SIERRATHERM.

DATE	REV	REVISION RECORD	DR. CK
4/24/97	A	PRODUCTION RELEASE	WTD



NOTES:

1. RAISE FURNACE UP ON TO THE LEVELING LEGS BEFORE MAKING THE UTILITY CONNECTIONS. THE LEVELING LEGS ARE INSTALLED IN THE FULLY RAISED POSITION AT THE FACTORY - IT WILL BE NECESSARY TO REMOVE THE OUTER PANELS TO REACH THEM.
2. UTILITY REQUIREMENTS:
 - A. AIR IN. 5400 SCFH MAX @ 80 PSI (2000 SCFH TYP.)
 - B. COOLING WATER IN, 2 GPM AT 60 PSI
 - C. WATER OUT
 - D. 460 VAC, 3 PHASE, 3 WIRE, 152 KVA, 60 HZ

SIERRATHERM

SIERRATHERM PRODUCTION FURNACES
7 HANGAR WAY
WATSONVILLE, CA 95076
(408)763-0117

DATE: 4/24/97
SCALE: NONE
DRAWN BY: WTD
APPR. BY: WTD
SHEETS: 1 OF 1
TOLERANCE:
.XX = +/- .06
.XXX = +/- .005

TITLE:
4K36-60-41A/
1K36-150C69-12A
OUTLINE & UTILITY CONN.

DRW NO: 6-90-15140 REV A